

ERRA Committees' mandates and the 2024-26 workplans

Kacper JAROSZ

ERRA Secretariat



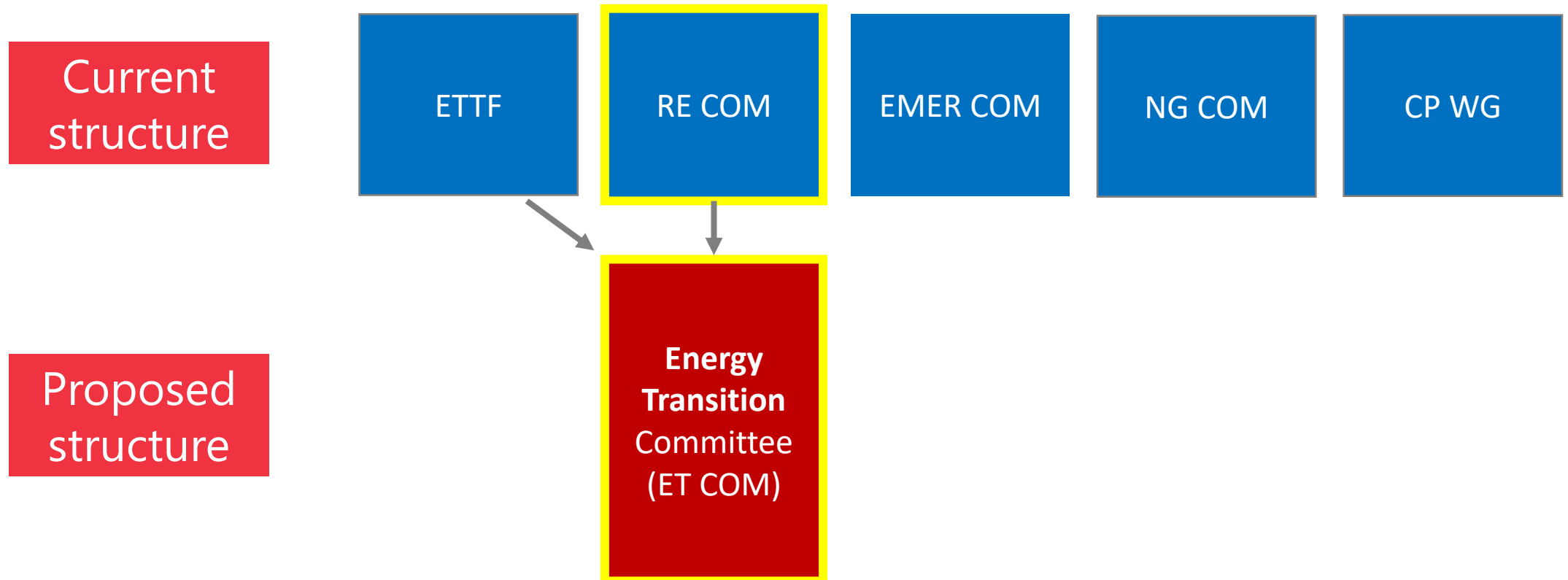
Proposal on adjustments in Committee structure

- ERRA Secretariat has proposed a change in the Committee structure



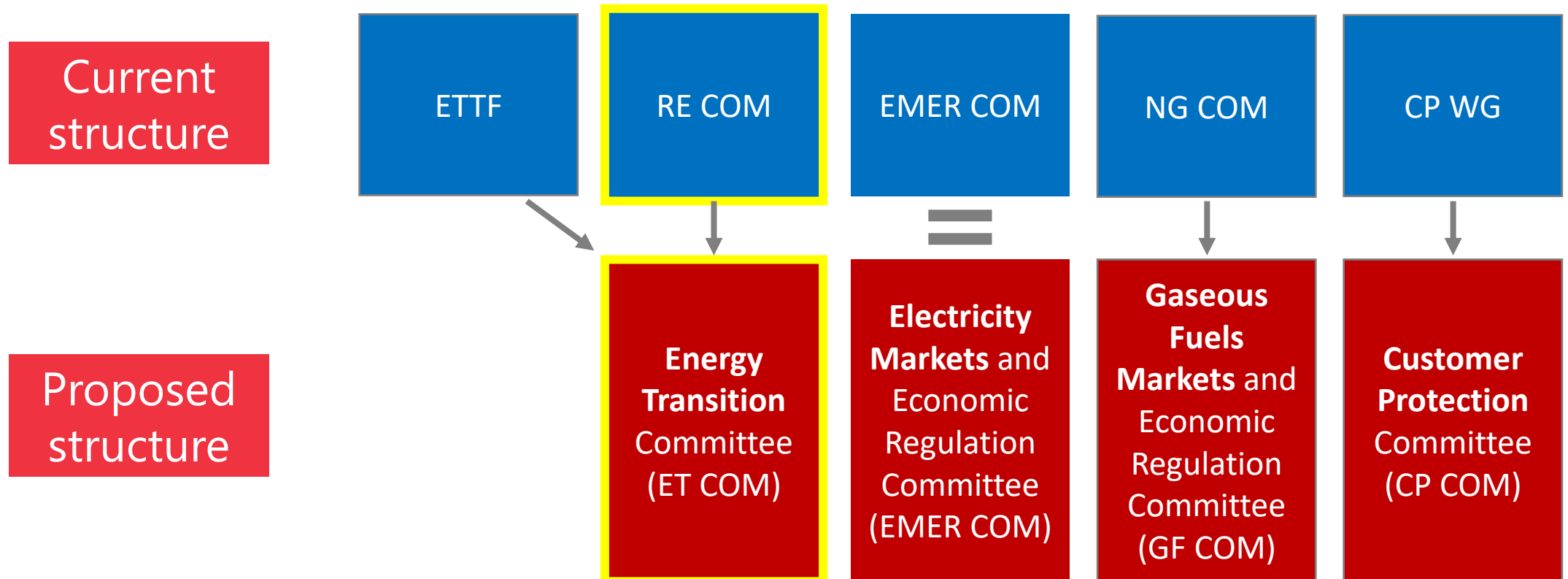
Proposal on adjustments in Committee structure

- ERRA Secretariat has proposed a change in the Committee structure



Proposal on adjustments in Committee structure

- ERRA Secretariat has proposed a change in the Committee structure
- ERRA Presidium's final decision until early March



ET COM establishment – reasons

- The topics and scope of the ETTF and the RE COM have been to some extent overlapping.

ET COM establishment – reasons

- The topics and scope of the ETTF and the RE COM have been to some extent overlapping.
- With a unified ET COM, ERRA can be more coherent with its energy transition related work

ET COM establishment – reasons

- The topics and scope of the ETTF and the RE COM have been to some extent overlapping.
- With a unified ET COM, ERRA can be more coherent with its energy transition related work



Broader
scope, new
topics



More
attractive to
the
members

ET COM establishment – next steps

- The Committee is now confirmed by the Presidium, but will *de iure* start its operations in March, after the last physical meeting of RE COM on March 7 in Bratislava, Slovakia.

ET COM establishment – next steps

- The Committee is now confirmed by the Presidium, but will *de iure* start its operations in March, after the last physical meeting of RE COM on March 7 in Bratislava, Slovakia.
- Official information to chairmen will go out next week together with a proposal to confirm delegation to the Committee.

ET COM establishment – next steps

- The Committee is now confirmed by the Presidium, but will *de iure* start its operations in March, after the last physical meeting of RE COM on March 7 in Bratislava, Slovakia.
- Official information to chairmen will go out next week together with a proposal to confirm delegation to the Committee.
- Confirming delegates to ET COM – until Feb 23

ET COM establishment – next steps

- The Committee is now confirmed by the Presidium, but will *de iure* start its operations in March, after the last physical meeting of RE COM on March 7 in Bratislava, Slovakia.
- Official information to chairmen will go out next week together with a proposal to confirm delegation to the Committee.
- Confirming delegates to ET COM – until Feb 23
- The first planned meeting of the ET COM will take place either in June (online) or in autumn (physical)

ET COM establishment – next steps

- The Committee is now confirmed by the Presidium, but will *de iure* start its operations in March, after the last physical meeting of RE COM on March 7 in Bratislava, Slovakia.
- Official information to chairmen will go out next week together with a proposal to confirm delegation to the Committee.
- Confirming delegates to ET COM – until Feb 23
- The first planned meeting of the ET COM will take place either in June (online) or in autumn (physical)
- RE COM Chairs will stay acting Chairs of ET COM until the first meeting, when elections will be held.

ET COM workplan - background



Next workplan period

June 2024 – June 2026

ET COM workplan - background



Next workplan period

June 2024 – June 2026



Committee workplan

Committee workplan will be based on adjusted scope compared to the RE COM scope.

ET COM workplan - background



Next workplan period

June 2024 – June 2026



Committee workplan

Committee workplan will be based on adjusted scope compared to the RE COM scope.



Presentation of the workplan

17 May 2024

ERRA General Assembly

ET COM workplan - background



Next workplan period

June 2024 – June 2026



Committee workplan

Committee workplan will be based on adjusted scope compared to the RE COM scope.



Presentation of the workplan

17 May 2024

ERRA General Assembly



First new workplan topics

First new workplan topics will be addressed after May

ET COM workplan – process starting soon

- The **online workplan form** will be the key tool to gather workplan ideas for the next 2 years:

ET COM workplan – process starting soon

- The **online workplan form** will be the key tool to gather workplan ideas for the next 2 years:
 - ✍ „Input-type“ items
 - ✍ „Output-type“ items

ET COM workplan – process starting soon

- The **online workplan form** will be the key tool to gather workplan ideas for the next 2 years:
 - ✍ „Input-type“ items
 - ✍ „Output-type“ items
- The form will be open for ideas from RE COM members, ETTF members and member Chairmen

ET COM workplan – process starting soon

- The **online workplan form** will be the key tool to gather workplan ideas for the next 2 years:
 - ✍ „Input-type“ items
 - ✍ „Output-type“ items
- The form will be open for ideas from RE COM members, ETTF members and member Chairmen
- Form launch – first week of February
- Form close – first week of March

ET COM workplan – process starting soon

- The **online workplan form** will be the key tool to gather workplan ideas for the next 2 years:
 - ✍ „Input-type“ items
 - ✍ „Output-type“ items
- The form will be open for ideas from RE COM members, ETTF members and member Chairmen
- Form launch – first week of February
- Form close – first week of March
- March meeting – discussion on proposals

THANK YOU FOR YOUR ATTENTION!