

DSO Tariff Structure

Roundtable input by Austria

Stefan Katzmann

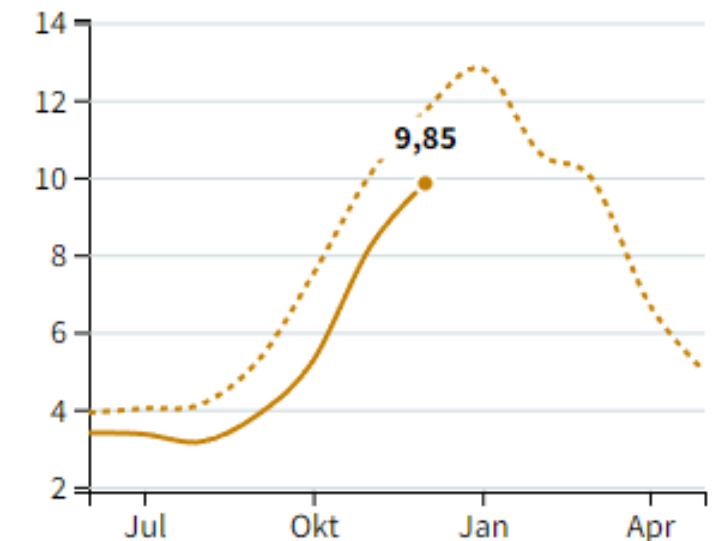
E-Control



Basic Information of Distribution System

- *Length: ~44.000 km*
- *19 Distribution System Operators*
- *9 different tariffs (each federal state one tariff)*
- *Consumption 2023: 75,6 TWh (2021: 96,3 TWh)*
- *Monthly gas consumption declining*
 - *December 2022: 10,82 TWh*
 - *December 2023: 9,85 TWh*
 - *-9,0 % monthly decline of consumption*
- *Last winter: demand reduction of almost 20%*
- *Gas storage capacity: 97,7 TWh*

Gas consumption per month in a 5-year comparison (in TWh)



— Aktueller Verbrauch
- - - Verbrauch Mittelwert 2018-2022

Source: <https://energie.gv.at>

- 4th regulatory period 2023-2027 (5 years)
- Tariffs set in annually changing Gas System Charges Ordinance (Gas-Systemnutzungsentgelte-Verordnung) for TSOs and DSOs.
- Different tariffs
 - Grid provision charge
 - Grid utilisation charge for end consumers and grid operators
 - Grid utilisation charge in the distribution network at the market area border
 - Grid utilisation charge in the distribution network for storage companies
 - Grid utilisation charge in the distribution network for production and the generation of renewable gases
 - Charge for metering services

DSO Tariff Structure

- Grid utilisation charge depends on grid areas, grid levels and consumer category.
 - Grid areas correspond to the federal states.
 - 3 grid levels available (level 1 supra-regional, level 2 and 3 local area and directly to consumers).
 - Consumption on grid level 3 can be measured for industry/commercial consumers ("Zone/Staffel" A-D) or households and some commercial consumers ("Zone/Staffel" 1-4) with different metering devices.
 - Example of Vienna on grid level 3 in 2024

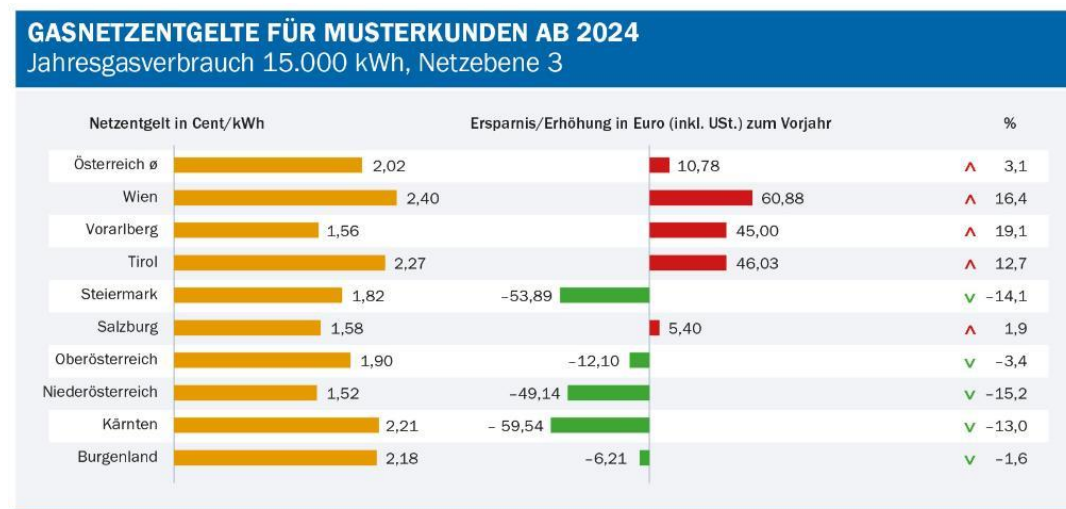
Netzbereich Wien Ebene 3

Verbrauch [kWh/a]	Arbeitspreis [Cent/kWh] gem. Abs. 5	Arbeitspreis [Cent/kWh] gem. Abs. 6c	Pauschale pro Monat [Cent]	Leistungspreis [Cent/kWh/h] gem. Abs. 5	Leistungspreis [Cent/kWh/h] gem. Abs. 6c
0 ≤ 40.000	Zone 1	2,1568	Staffel 1	300	
>40.000 ≤ 80.000	Zone 2	1,4164	Staffel 2	300	
>80.000 ≤ 200.000	Zone 3	1,4164	Staffel 3	300	
>200.000	Zone 4	1,2075	Staffel 4	300	
0 ≤ 5.000.000	Zone A	0,5781	Staffel A		808
>5.000.000 ≤ 10.000.000	Zone B	0,3433	Staffel B		808
>10.000.000 ≤ 100.000.000	Zone C	0,1901	Staffel C		808
>100.000.000	Zone D	0,1901	Staffel D		808

Source: E-Control

Grid utilisation charge 2024

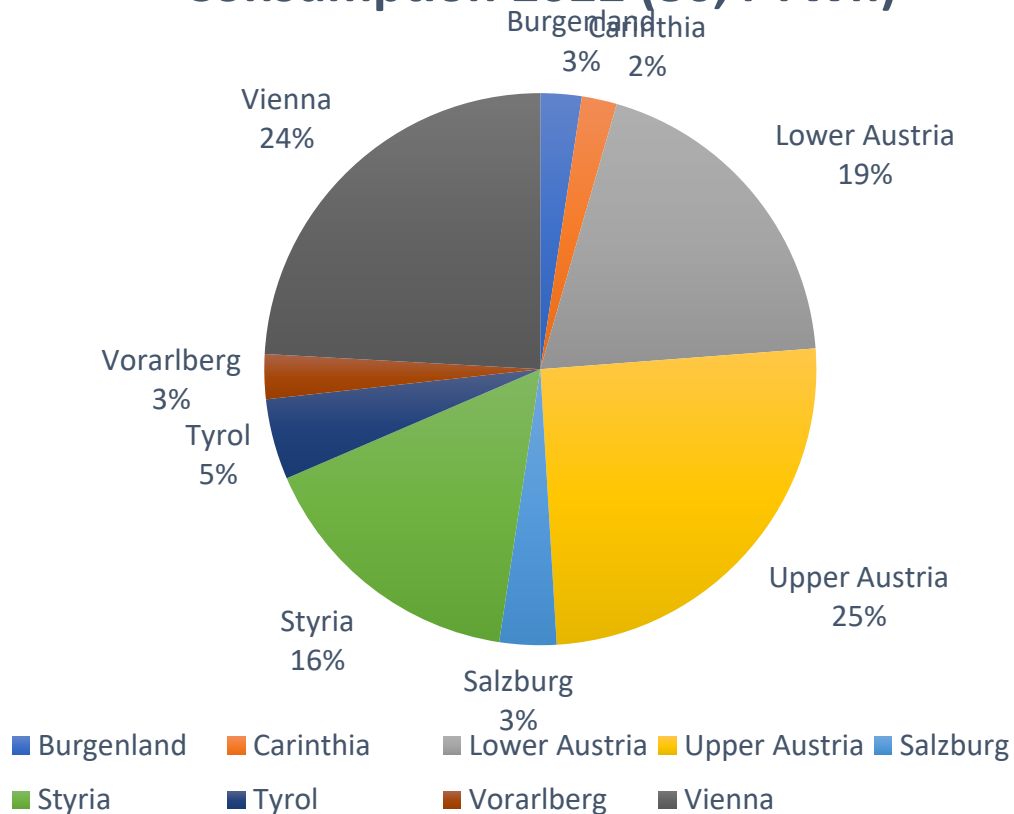
- Grid utilisation charge for an average household will increase moderately on average in 2024, while individual grid areas will have a major changes.
- Depending on the federal state, network charges account for around 30% of the total gas bill, with the remainder being accounted for by the cost of gas supply as well as taxes and levies.



Source: E-Control

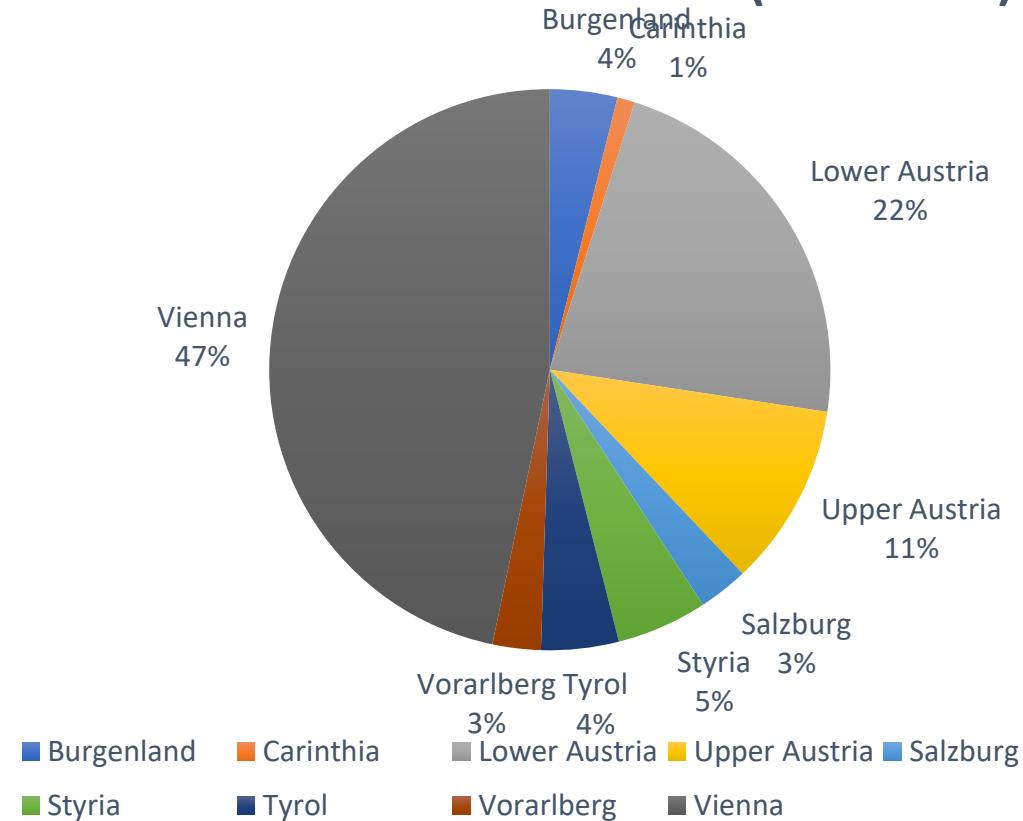
Distribution of consumption and consumers

Consumption 2022 (86,4 TWh)



Source: E-Control

Number of consumers 2022 (1.187.000)



Source: E-Control

- Gas Act (Gaswirtschaftsgesetz) 2011:
<https://www.ris.bka.gv.at/GeltendeFassung.wxe?Abfrage=Bundesnormen&Gesetzesnummer=20007523>
- Gas System Charges Ordinance (Gas-Systemnutzungsentgelte-Verordnung):
<https://www.ris.bka.gv.at/geltendefassung.wxe?abfrage=bundesnormen&gesetzesnummer=20007992>



**THANK YOU
FOR YOUR ATTENTION!**

stefan.katzmann@e-control.at