

Enhancing Renewables and SAIDI/SAIFI Performance: Evolution and Future Update by **EMRA/Türkiye**

Murat YILMAZ
Energy Specialist



Outline

Renewable Expansion and SAIDI/SAIFI Enhancements



Managing SAIDI/SAIFI via Ancillary Services in Renewables



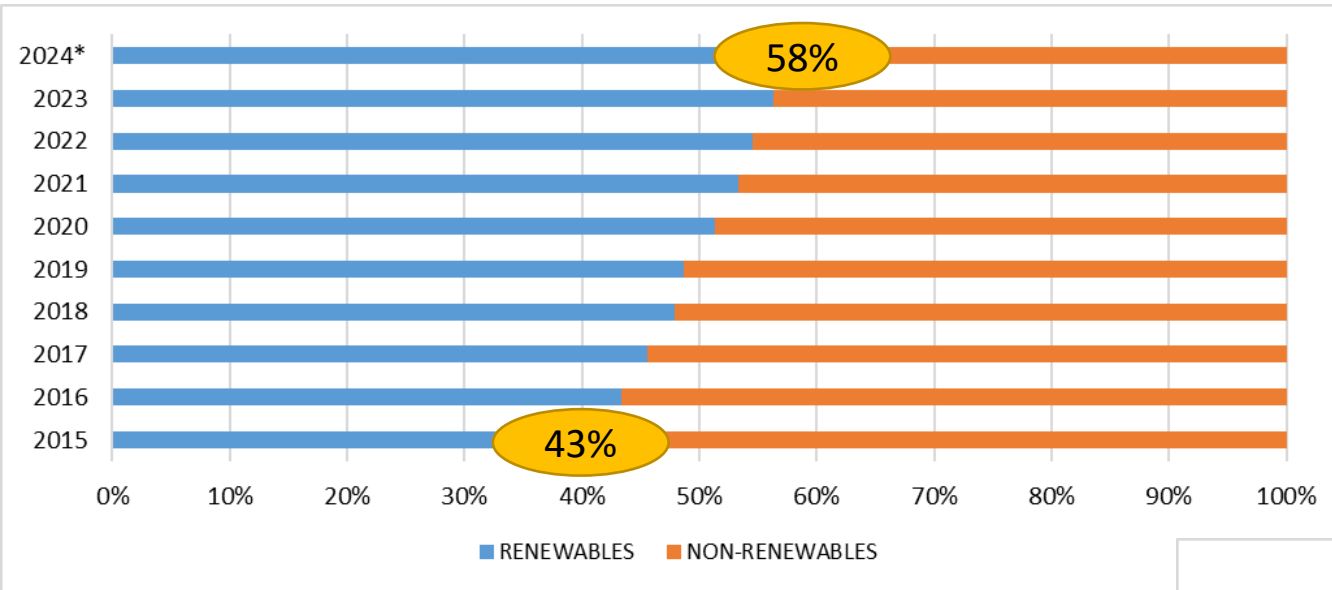
SAIDI/SAIFI Gains Through Energy Solutions



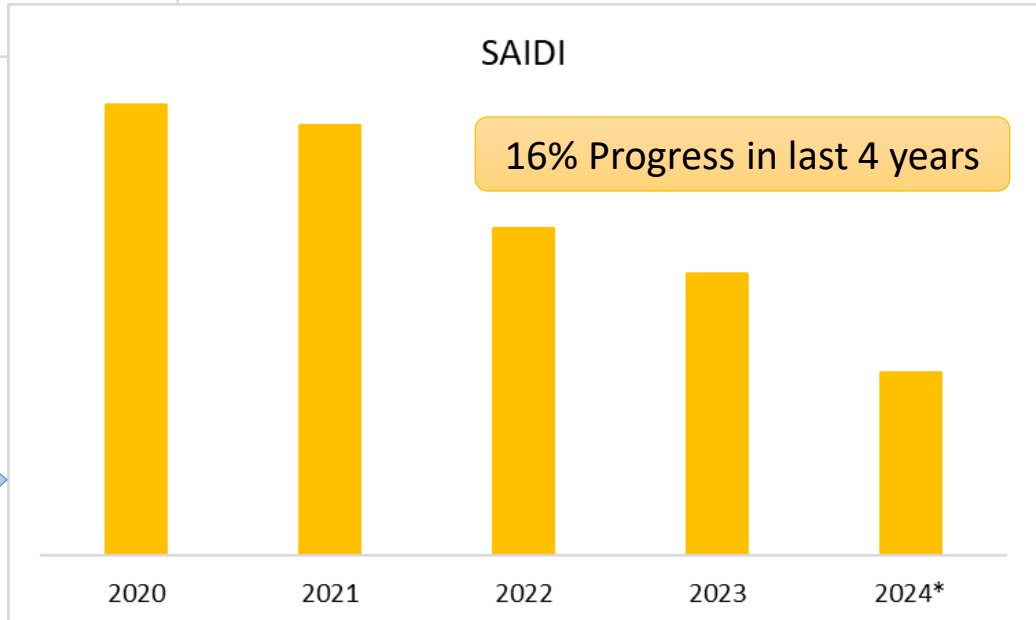
Managing SAIDI/SAIFI Challenges in Renewable Growth with Battery Storage



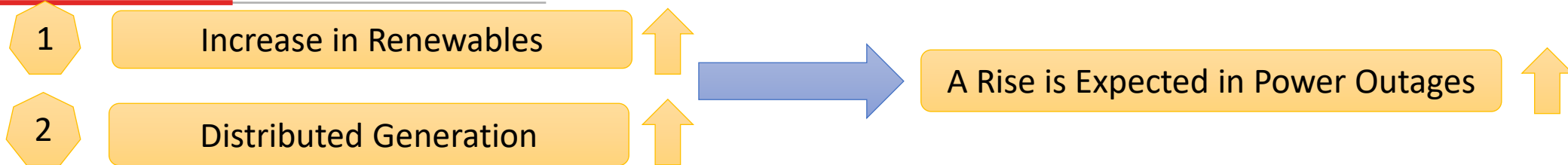
Renewable Expansion and SAIDI/SAIFI Enhancements



September, 2024
114 GW Total Installed Capacity

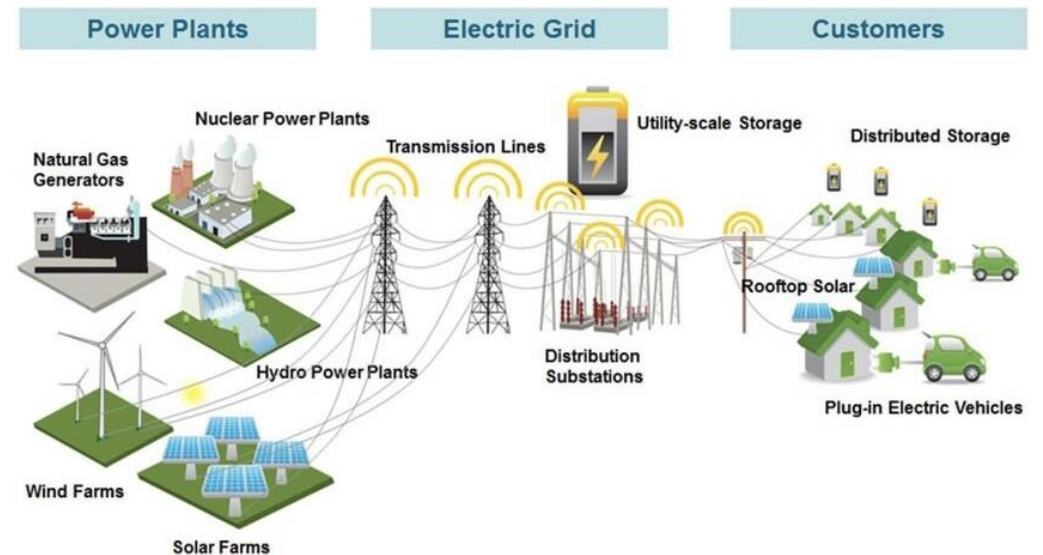
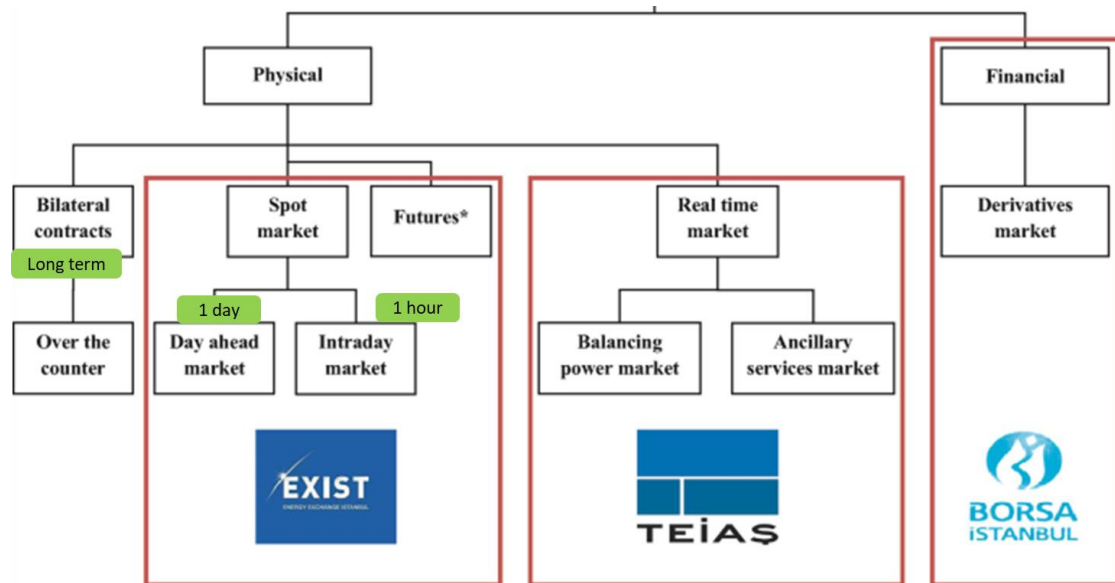


Managing SAIDI/SAIFI via Ancillary Services in Renewables



Mitigating Adverse Effects of Renewables (Smoother transition toward sustainable energy solutions)

- TEİAŞ Ancillary Services

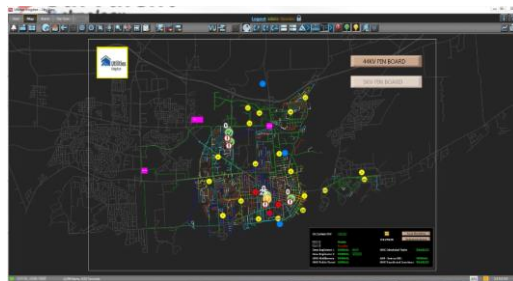


SAIDI/SAIFI Gains Through Energy Solutions



- Planned maintenance
- Upgrades at the electricity grid
- Enhancements in outage management systems
- Infrastructure investments

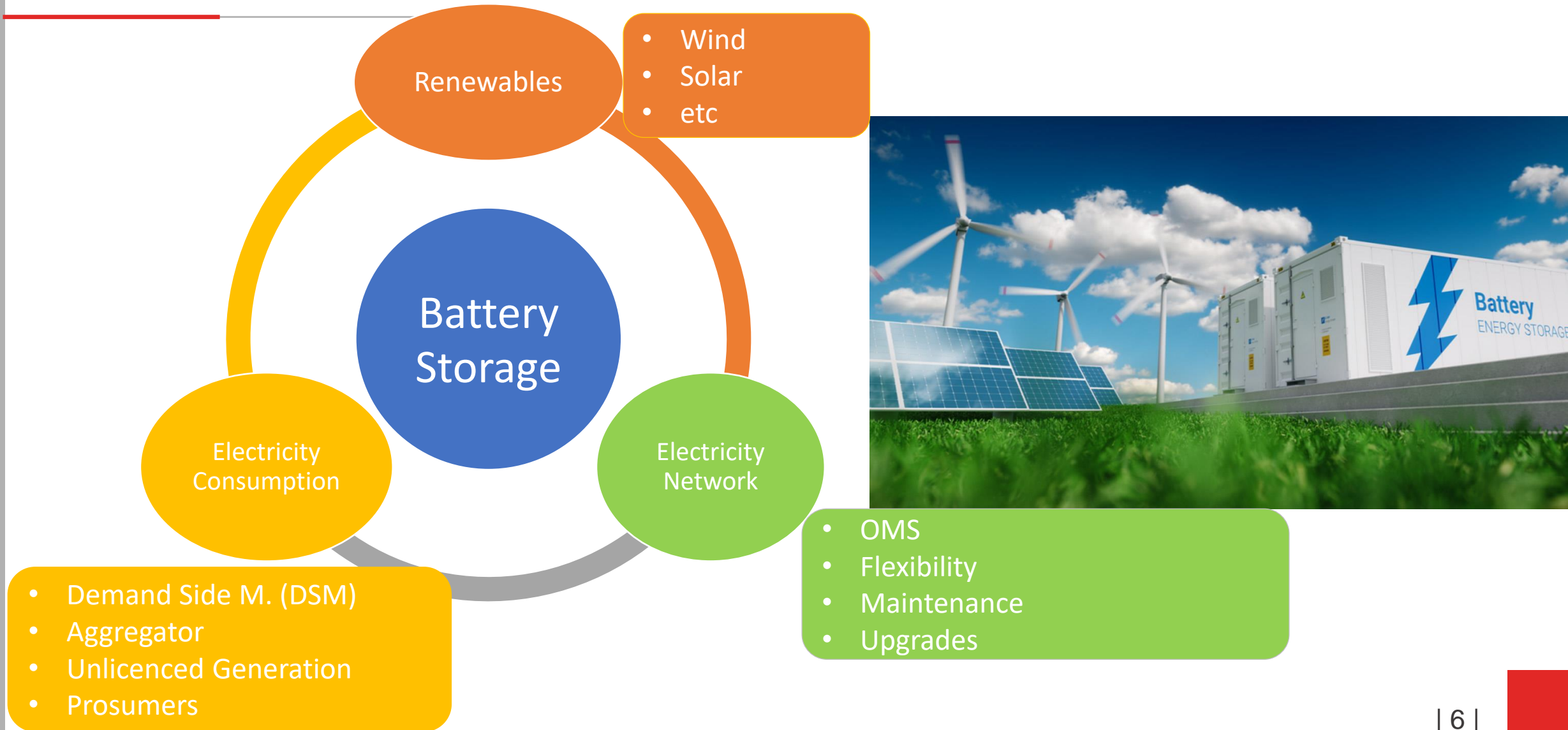
Outage Management System (OMS)



- Power outage isolation
- Gradual electrification of grid
- Ring networks



Managing SAIDI/SAIFI Challenges in Renewable Growth with Battery Storage





**THANK YOU
FOR YOUR ATTENTION!**

Murat YILMAZ
muratyilmaz@epdk.gov.tr